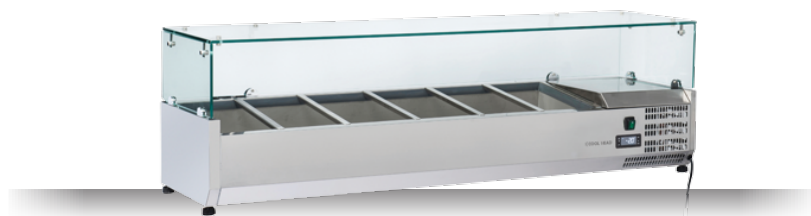




DETAILS



GENERAL FEATURES

Refrigerated horizontale showcase (Pans GN1/3)	•
Stainless Steel exterior and interior	•
Static Cooling	•
Automatic compressor cycle defrost	•
Single copper pipe evaporator (No welding in the foaming)	•
Digital Thermostat	•
N.4 Adjustable feet	•
Spacer set included	•
GN1/3 Pans are not included with the unit	•
Tempered glass top	•
Energy efficiency class: -	•

TECHNICAL SPECIFICATIONS

Capacity	58 L
Temperature	+2° ~ +8°C
Consumption	1.5 kWh/24h
Rated Power	160 W
Noise level	56 dB(A)
Net Weight	46 Kg
Gross Weight	73 Kg
External Dimensions (WxDxH mm)	1500x395x440
Internal Dimensions (WxDxH mm)	1150x310x163
Packaging dimensions (WxDxH mm)	1640x465x460
Loading quantities 20'/40'/40'HQ	75/160/160

CERTIFICATION



PRODUCT DIMENSIONS

